



Reputable manufacturing expert of LASER equipment

吉林省永利激光科技有限公司

Jilin Yongli Laser Technology Co.,Ltd.

地址:中国, 吉林省长春市北湖科技开发区雅安路1588号
Address: No.1588,Ya'an Road,North Lake Science and Technology Development Zone
Changchun 130102,Jilin Province,China

邮编: 130102 Postcode: 130102

电话: +86-431-8462-3618 Tel: +86-431-8462-3618

国际业务: +86-188-4301-3580 International Sales: +86-188-4301-3580

国内业务: +86-187-4309-7986 Domestic Sales: +86-187-4309-7986

迪拜办事处: +97-156-2701-263 Dubai Office: +97-156-2701-263

售后和客服: +86-188-4301-3576 Customer Service: +86-188-4301-3576

+86-431-8108-7666 +86-431-8108-7666

投诉及建议: +86-187-4309-7987 Complaints: +86-187-4309-7987

Website: www.yl-laser.com ; [Http://yllaser.en.alibaba.com](http://yllaser.en.alibaba.com) E-mail: Sales@yl-laser.com



EXPERT Of laser Equipment

专业激光器件品牌智造者
Reputable Manufacturing
Expert of CO₂ Laser equipment



C ontents

目录

01	As系列 As series	05	H系列 H series	09	B系列 B series	13	DLT-S系列 DLT-S series	17	RLT系列 RLT series	21	激光配件 Laser Accessories	31	
Enterprise Introduction 公司介绍	03	R series R系列	07	T series T系列	11	SL series SL系列	15	DLT-S series DLT-S系列	19	Power supply 激光电源	23	Honor&Qualifications 荣誉资质	

OPEN EYES

公司介绍

TO THE WORLD

吉林省永利激光科技有限公司成立于2005年6月，专注于激光器核心配件研发及生产工作，坐落在中国第一台激光器的诞生地—长春。作为国家级高新技术企业，永利人坚持至专、至诚、致远的经营理念，一直以来追求优质、高效的生产模式。公司于2007年设立研发中心，建有千余平米光学无尘生产车间，是以研究员、高级工程师、高级技师带队的创新集体，拥有领先的激光器件科研成果。先后被评为中国光学学会激光分会理事单位、中国光学学会激光加工专业委员会委员、长春民营企业协会副会长单位、吉林省科技“小巨人”企业、吉林省省级企业技术中心、长春市科技型“小巨人”企业、长春市市级企业技术中心、长春市百户专精特新中小企业等。公司拥有独立的进出口权，主营产品通过了ISO9001:2015质量体系认证、CE认证、FCC认证、FDA认证、REACH认证、ROHS认证。

永利激光立足长远，努力开拓，为了满足客户需要，现已形成市场为主导的科研型多元化生产模式，核心产品为二氧化碳激光管、光纤激光器、射频激光器、激光电源、激光功率计、激光传输器及其他激光配件。其中二氧化碳激光管系列产品批量生产三大系列（科研用、医疗用、工业用）二十几个规格型号，具备年生产量十万支的生产能力。公司全部产品均为自主研发，其中多种产品技术为国内首创、国际领先，现已获得国家专利三十余项。

为提升企业核心竞争力，公司在迪拜、华南、华北等地区设立办事处和分支机构，逐步满足全国各地的客户需求。经过多年来市场的磨练，永利激光现已成为国内数十家大型激光整机生产厂家的稳定核心供应商，产品出口至世界80多个国家和地区，注册商标50余个国家，并获得了良好的国际声誉。

永利以品质、服务、创新为经营之道，以放心、省心、安心、共赢为合作之道，坚持做一家有专业技术、有企业文化、有责任担当的企业，做激光器行业第一品牌。

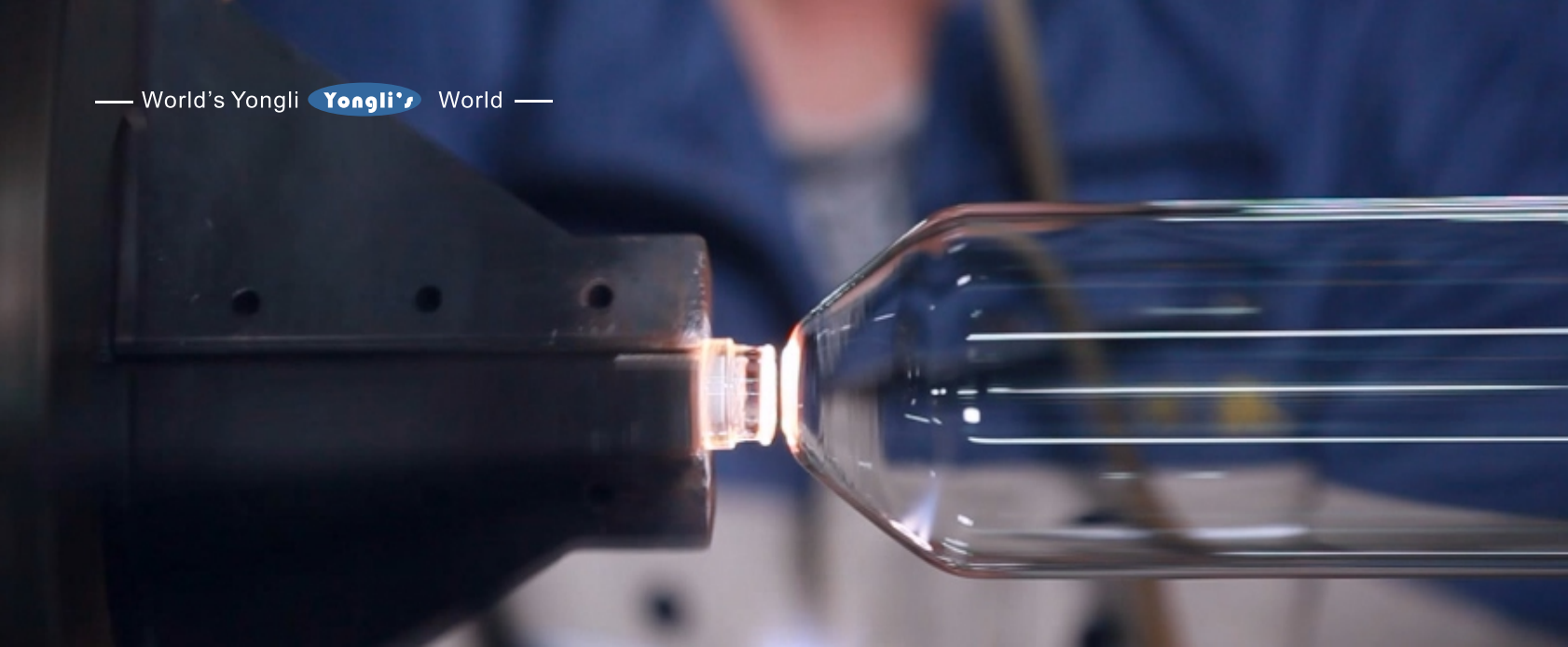
Jilin Yongli Laser technology co.,ltd.was founded in June 2005,located at the birthplace of Chinese first laser-Changchun,and focuses on researching ,developing and manufacturing the core parts of laser equipment. As a national high-tech enterprise, it pursues an qualified and efficient producing pattern with the business philosophy of professional, trustworthy and looking for long-term development. R&D center was established in 2007,with more than a thousand square meters optical production level ultra-clean workshop. This group is led by researchers, senior engineers and senior technicians, and already has a number of leading laser devices scientific research. Yongli is awarded the governing units of the Chinese Optical Society of Laser Branch, the member of Chinese Optical Society Laser Processing Committee, Vice President of the Association of Changchun Private Enterprises, Jilin Province Small Tech Giant, the Province-Class Enterprise Tech Central, Changchun City Small Tech Giant, the City-Class Enterprise Tech Central, One of the Changchun City 100 Professional, Technical, Innovative and Minor Enterprises. Yongli has the independent export entitlement. The main products are approved by ISO9001:2015 quality management system, and won the CE,FCC,FDA,REACH and ROHS approvals.

Yongli lays emphasis on long-term development efforts, to meet customer's requirements. The company has established a market-oriented,research-based diversified production patterns. The core products are CO2 laser tube, fiber laser equipment, RF CO2 laser equipment, laser power supply, power meter, laser transmitter, and other laser accessories. Among those, the annual mass production capacity of these three series, more than twenty specifications CO2 laser tubes(research,medical,industrial) is up to 100,000 pieces. All the products are all independent researched and developed. Many technologies are domestic initiative and international leading. Until now, there already has bee more than thirty national patents.

In order to strengthen the company core competitiveness, and provide better customer service, Yongli sets up offices and branches in Dubai, Northern and Southern China. After years developing, Yongli has become the stable core supplier of the most large laser machine manufacturers in China. The products has been exported to more than 80 countries and regions. The trademark has been registered in more than 50 countries. A very good reputation on international market is gained.

Yongli insists on management idea of "quality first, customer foremost, innovation encouraged",and Keeps on the cooperation concept of "mutual trust and win-win cooperation."Yongli focuses on being a professional and responsible enterprise,and aims to be the first brand of laser industry.





AS series

As系列

该系列产品为我公司自有专利技术，采用物理方法对输出光斑直径及质量进行有效修正，提升功率的同时解决光斑模式变化的问题。腔内镜片升级，采用与美国 II-VI 公司合作开发的进口镜片，光斑模式好。采用国际新催化技术提升膜层牢固及催化还原性能，长时间工作更稳定，寿命更长。A6s、A8s针对薄金属及非金属厚板材，具有更好的切割效果。

Adopting our own patented technology to modify the beam size and quality effectively that solves the beam distortion, increase the effective power. Inner lens is upgraded.All inner lens and mirrors is imported and customized by the U.S.II-VI Infrared. Adopting new catalytic technology to enhance coating firmness and catalytic consumption, stabler on longtime working, lifespan is longer.A6s, A8s are capable of thin metal and non-metal cutting, with better cutting performance.



技术参数 Technical Parameter

型号 Model	长度 Len. (mm)	额定功率 Rated power (W)	最大功率 Max. Power (W)	外径 Dia. (mm)	起辉电压 Ignition Voltage (kV)	工作电压 Working Voltage (kV)	工作电流 Working Current (mA)	建议工作电流 Recommend working current (mA)	催化剂 Catalyst	功率 不稳定性 Power Instability (%)	用途 Application	质保期 Warranty (M)
A0s	600	28	35	Φ80±2	12	8	20	16	yes	≤ ±5	切割、雕刻 Cutting, Engraving	6
A1s	1100	70	90	Φ80±2	20	15	22	18	yes	≤ ±5	切割、雕刻 Cutting, Engraving	10
A2s	1250	90	100	Φ80±2	25	18	26	21	yes	≤ ±5	切割、雕刻 Cutting, Engraving	12
A4s	1450	100	130	Φ80±2	28	19	28	22	yes	≤ ±5	切割 Cutting	12
A6s	1650	130	160	Φ80±2	30	21	30	24	yes	≤ ±5	切割 Cutting	12
A8s	1850	150	180	Φ80±2	34	22	35	28	yes	≤ ±5	切割 Cutting	12



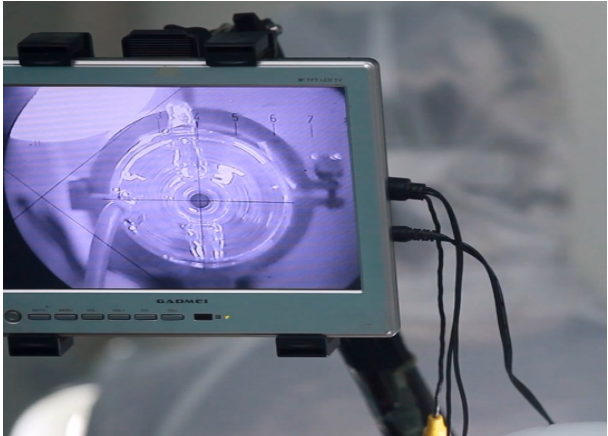
R

Series

R系列

该系列产品是在我公司传统产品的基础上进行的工艺升级和技术改进。拥有30余年的研发及生产经验，具备成熟的工艺设计体系，产品使用效果稳定且优异。在原有产品功率的基础上增加了20%，使用寿命延长30%-100%，产品已通过市场验证，使用效果好，性价比极高。

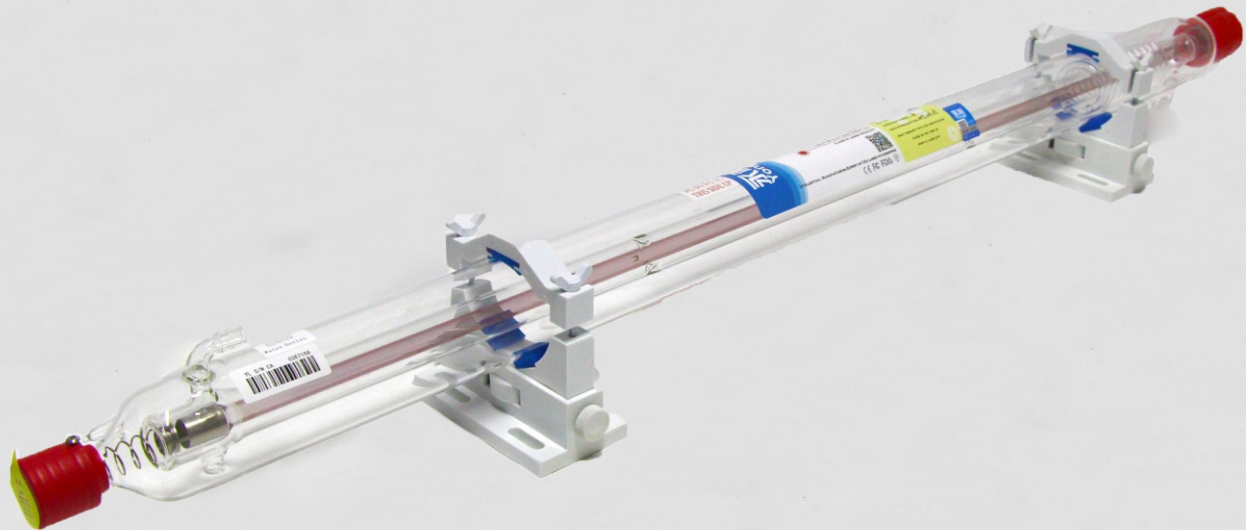
The technology of this series product is improved based on traditional technology. 20%increased in power on the basis of traditional products. Life extended 30%-100%.This series has been testified by the market, good performance, and better cost-effeciency.



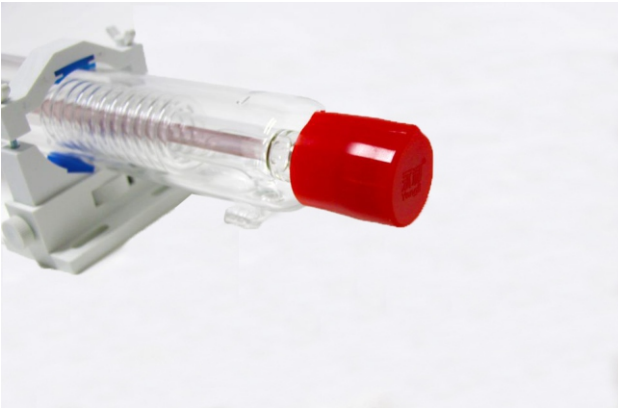
技术参数

Technical Parameter

型号 Model	长度 Len. (mm)	额定功率 Rated power (W)	最大功率 Max. Power (W)	外径 Dia. (mm)	起辉电压 Ignition Voltage (kV)	工作电压 Working Voltage (kV)	工作电流 Working Current (mA)	建议工作电流 Recommend working current (mA)	催化剂 Catalyst	功率 不稳定性 Power Instability (%)	用途 Application	质保期 Warranty (M)
R1	1050	60	70	Φ80±2	20	14	20	16	yes	≤±5	雕刻、切割 Engraving,Cutting	6
R3	1250	80	90	Φ80±2	23	16	26	21	yes	≤±5	雕刻、切割 Engraving,Cutting	10
R5	1450	100	110	Φ80±2	28	18	30	24	yes	≤±5	雕刻、切割 Engraving,Cutting	10
R7	1650	130	140	Φ80±2	29	20	32	26	yes	≤±5	切割 Cutting	10
R9	1850	140	150	Φ80±2	31	22	35	28	yes	≤±5	切割 Cutting	10



H系列激光管为我公司最新研发成果，产品工艺成熟，质量稳定可靠。采用最新工艺技术，提高了产品结构的稳定性，一定程度上改善了光斑输出模式。相较于其他类型产品，具有“优光斑、远汇聚、便安装”的特点。



H series laser tube is the latest research and development achievements of our company. The product technology is mature and the quality is stable and reliable. The use of the latest technology to improve the stability of the product structure, to some extent improved the spot output mode. Compared with other types of products, it has the characteristics of “excellent spot beam, far convergence, and easy installation”



技术参数 Technical Parameter

型号 Model	长度 Len. (mm)	额定功率 Rated power (W)	最大功率 Max. Power (W)	外径 Dia. (mm)	起辉电压 Ignition Voltage (kV)	工作电压 Working Voltage (kV)	工作电流 Working Current (mA)	建议工作电流 Recommend working current (mA)	催化剂 Catalyst	功率 不稳定性 Power Instability (%)	用途 Application	质保期 Warranty (M)
H1	1100	70	75	Φ60±2	24	18	20	16	yes	≤ ± 5	雕刻、切割 Engraving, Cutting	9
H2	1250	80	90	Φ60±2	28	20	26	21	yes	≤ ± 5	雕刻、切割 Engraving, Cutting	9
H4	1450	100	110	Φ60±2	31	22	28	22	yes	≤ ± 5	雕刻、切割 Engraving, Cutting	9
H6	1650	130	140	Φ70±2	33	24	30	24	yes	≤ ± 5	雕刻、切割 Engraving, Cutting	9



T

Series

T系列

T系列二氧化碳激光管结合了R系列和As系列产品优点，体积小结构简单，光斑模式优良，脉冲特性媲美射频，可适用于非金属精细雕刻和打标。是您更新换代的不二选择。

T series CO₂ laser tubes are a new generation product that comprehends the strengths of R series and As series; size is small and structure is concise, the beam is unimaginatively small and pulse capability is competitive to RF lasers which is applicable for precision engraving and marking, it's the first choice for your upgrades.



技术参数

Technical Parameter

型号 Model	长度 Len. (mm)	额定功率 Rated power (W)	最大功率 Max. Power (W)	外径 Dia. (mm)	起辉电压 Ignition Voltage (kV)	工作电压 Working Voltage (kV)	工作电流 Working Current (mA)	建议工作电流 Recommend working current (mA)	催化剂 Catalyst	功率 不稳定性 Power Instability (%)	质保期 Warranty (M)
T0	700	38	45	Φ55±2	16	10	18	14	yes	≤±5	9
T2	800	40	50	Φ55±2	17	12	20	16	yes	≤±5	9

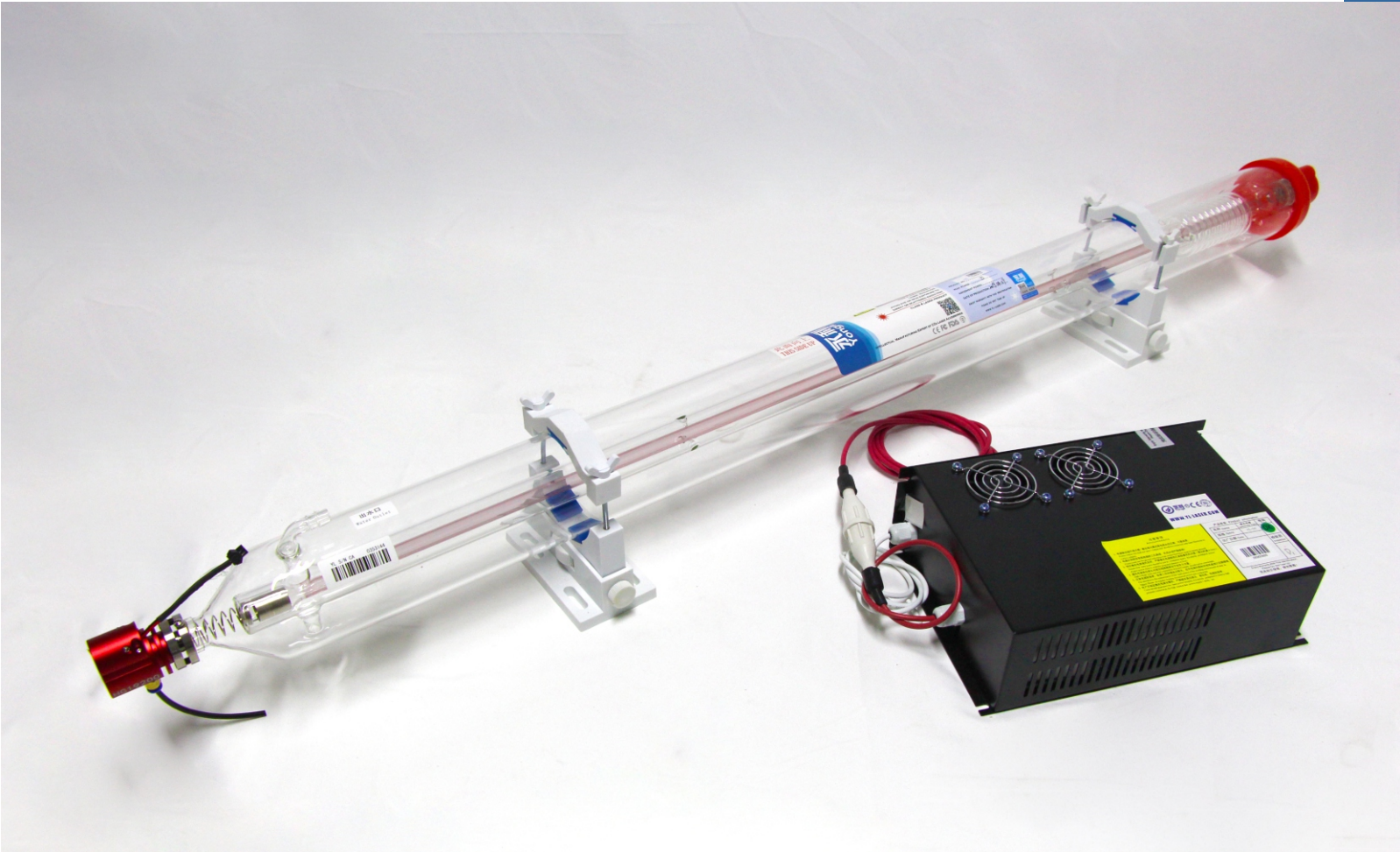
注：其他长度可定制

Note:Other lengths can be customized.



B系列激光器是针对雕刻、打标领域推出的一款应用集成化产品，该系列产品标配激光电源和红光指示，性价比极高。此产品具有响应速度快、光斑直径小的优点。永利近几年不断加大技术和研发投入，针对市场反馈的信息进行优化及微创新，使产品性能更符合细分行业的特殊需求。

B series laser is an integrated product aiming at engraving, marking industries, and equipped with laser power and red light indicator to make it highly cost-effective. It cuts faster with better beam mode. Yongli Laser has been increasing R&D investments these years to make products better fit in niche markets based on optimized feedback information from the market and micro innovations.



技术参数
Technical Parameter

型号 Model	长度 Len. (mm)	额定功率 Rated power (W)	外径 Dia. (mm)	起辉电压 Ignition Voltage (kV)	工作电压 Working Voltage (kV)	建议工作电流 Recommend working current (mA)	催化剂 Catalyst	功率 不稳定性 Power Instability (%)	质保期 Warranty (M)	标配配件 Standard accessories	用途 Application
B2	1270	75	Φ80±2	20	15	21	yes	≤ ± 5	6	激光电源、红光指示 Laser power supply, Red light indicator	雕刻、打标 Engraving, Marking
B4	1470	95	Φ80±2	28	18	22	yes	≤ ± 5	6	激光电源、红光指示 Laser power supply, Red light indicator	雕刻、打标 Engraving, Marking

技术参数

Technical Parameter

型号 Model	SL20F	SL100F	SL200F	SL300F	SL500S	SL1000S	SL1500S	SL2000S
额定功率 Rated power(W)	25	110	210	330	530	1100	1600	2000
中心波长 Central Wavelength (nm)	1064	1070	1070	1070	1070	1070	1070	1070
工作模式 Working Mode	连续/调制 CW/Modulation		连续/调制 CW/Modulation		连续/调制 CW/Modulation		连续/调制 CW/Modulation	
最大调制频率 Max Modulation Frequency(KHZ)	50	50	50	50	50	50	50	50
功率不稳定性 Output Power Instability	<3%	<3%	<3%	<3%	<3%	<3%	<3%	<3%
红光指示 Red Indicator	YES	YES	YES	YES	YES	YES	YES	YES
光纤输出接口 Fiber Output interface	准直输出 Collimating	准直输出 Collimating	准直输出 Collimating	QBH/QCS	QBH/QCS	QBH/QCS	QBH/QCS	QBH/QCS
输出光纤芯径 Output Fiber Core	14μm	14μm	14μm	14μm	25μm	50μm	50μm	50μm
输出光纤长度 Delivery Cable Length	5m/可定制 5m/Customizable		5m/可定制 5m/Customizable		15m/可定制 15m/Customizable		15m/可定制 15m/Customizable	
工作电压 Working Voltage(v)	DC10	DC30	DC58	DC45	AC220	AC220	AC380	AC380
最大功耗 Max Power Consumption(w)	120	360	690	1080	2000	3200	5000	5000
控制模式 Control Type	Ad/超级终端 Ad/Hyper Terminal		Ad/超级终端 Ad/Hyper Terminal		Rs232/AD/超级终端 Rs232/AD/Hyper Terminal		Rs232/AD/超级终端 Rs232/AD/Hyper Terminal	
功率调整范围 Power Adjusting Range(%)	10~100	10~100	10~100	10~100	10~100	10~100	10~100	10~100
工作环境温度 Working Environment Temperature(℃)	5~35	5~35	5~35	5~35	5~35	5~35	5~35	5~35
冷却方式 Cooling Method	强制风冷 Air cooling		强制风冷 Air cooling		水冷25度/>12(l/min) Water cooling 25℃/>12(l/min)		水冷25度/>20(l/min) Water cooling 25℃/>20(l/min)	
尺寸 Size (mm)	250x180x45	305x235x104	370x274x120	420x316x142	500x432x97	476x213x656	608x440x208	608x440x208



Sunlite连续光纤激光器的输出功率范围为100W至2000 W，具有工作波长范围广、单模和多模可选、低振幅噪声、高稳定性以及泵浦二极管使用寿命长等诸多特点。风冷装置的激光器，平均功率高达300 W；紧凑型水冷装置的激光器，平均功率则可提供高达2KW。全新设计的电子系统可实现控制功能扩展。激光器可搭配多种光纤终端或准直光学器件。

Sunlite continuous fiber lasers have an output power range of 100W to 2000W and feature a wide operating wavelength range, single-mode and multi-mode options, low amplitude noise, high stability, and long service life of pump diodes. The air-cooled unit's lasers have an average power of up to 300 W; the compact water-cooled unit's lasers provide an average power of up to 2 kW. The newly designed electronic system enables control function expansion. The laser can be used with a variety of fiber optic terminals or collimating optics.



SL20F

SL100/200/300F

SL500S

SL1000/1500S/2000S

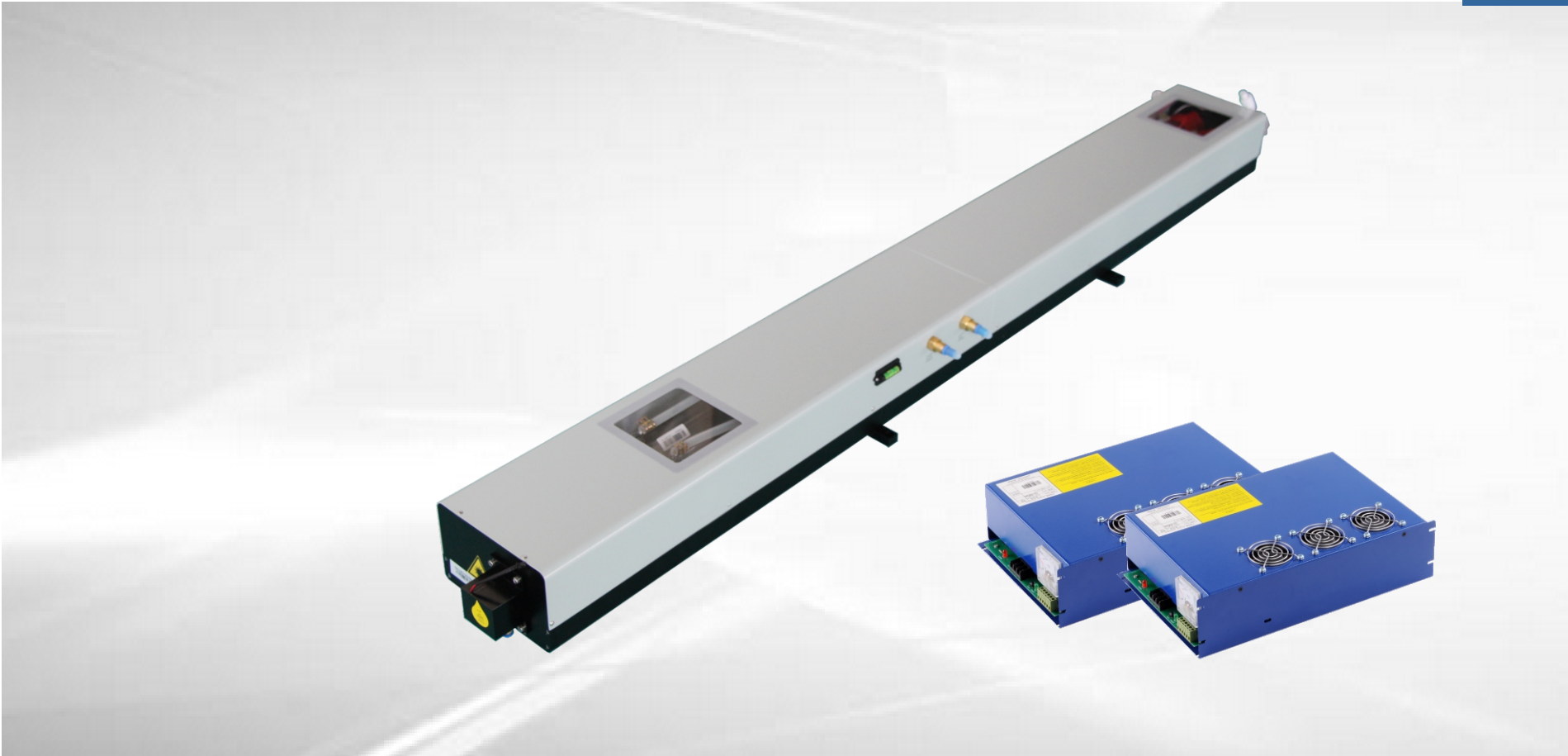


性能特点

- 合束：合束设计采用自有专利技术，内含一体化合光装置。
- 光斑：具有稳定的光斑模式。（1+1≈1）
- 功率：单管输出、双管同步控制均可，功率输出连续可调（50-290W/50-320W）。
- 寿命：采用可伐封接技术，内含催化剂，使用寿命达10000小时以上。
- 配置：标配气泡水平仪，工作状态可视窗，可选配红光指示装置。
- 安全防护：开盖保护，断水保护及冷却液超温保护，配有防护镜片及防尘吹气装置。
- 适用材料：3mm不锈钢，4mm碳钢。
- 应用领域：刀模加工、印刷包装，广告装饰，家具，制鞋、钣金加工等行业。

Performance Feature

- Beam: Using Yongli patented technology. it includes an integrated beam combiner.
- The Spot: Stable beam spot pattern. (1+1≈1)
- Power: Each set can be synchronously controlled and continually adjusted from 50-290W/50-320W.
- Lifetime: With Kovar sealing technology and inner catalyst,lifetime is over 10000Hrs.
- Configuration: Standard bubble leveling instrument, Visual working window, optional red light indicator.
- Safety protection: Open cover protection, Water protection and coolant over-temperature protection, with protective lenses and dust blowing device.
- Applicable materials: 3mm stainless steel, 4mm steel
- Application: Die-board processing, printing and packaging, advertising decoration, furniture, footwear, sheet metal processing and other industries.

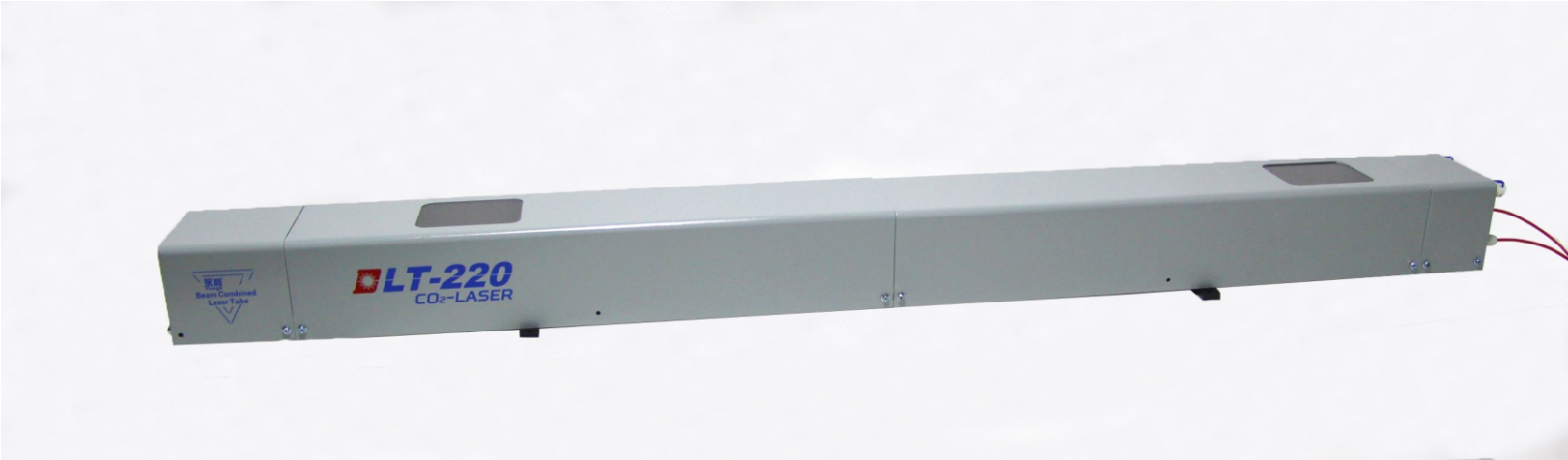
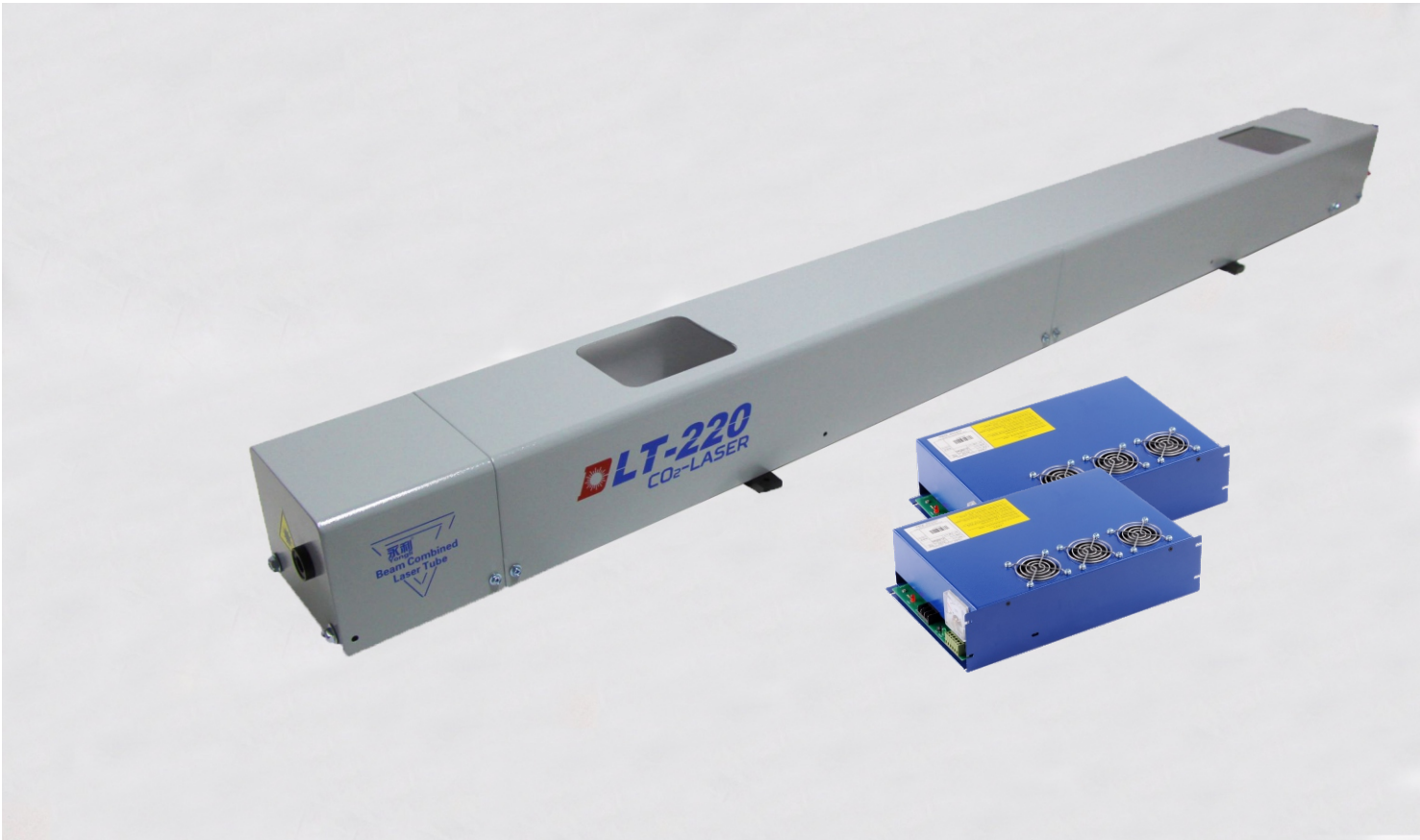


技术参数
Technical Parameter

型号 Model	额定功率 Rated power (W)	最大功率 Max. Power (W)	起辉电压 Ignition Voltage (kV)	工作电压 Working Voltage (kV)	最大工作电流 Max Operating Current (mA)	建议工作电流 Recommend working current (mA)	功率不稳定性 Power Instability (%)	尺寸 Laser tube size L×W×H (mm)	建议安装尺寸 Recommend Installation space L×W×H (mm)	质保期 Warranty (M)
DLT-280S	270	290	40	26	38	30	≤ ± 5	1850x265x144	2000x400x200	12
DLT-300S	300	320	40	26	38	30	≤ ± 5	1850x265x144	2000x400x200	12

DLT-S Series

DLT-S系列



技术参数
Technical Parameter

型号 Model	额定功率 Rated power (W)	最大功率 Max. Power (W)	起辉电压 Ignition Voltage (kV)	工作电压 Working Voltage (kV)	最大工作电流 Max Operating Current (mA)	建议工作电流 Recommend working current (mA)	功率不稳定性 Power Instability (%)	尺寸 Laser tube size L × W × H (mm)	建议安装尺寸 Recommend Installation space L × W × H (mm)	质保期 Warranty (M)
DLT-220S	210	220	32	20	30	26	≤ ± 5	1650x170x130	1900x220x180	12

性能特点

- 结构：采用全金属结构，具有体积小、全封闭、免维护、输出光束质量高、输出功率方便可调、功率稳定性优异、运行可靠性高等优点，具有极长的使用寿命，非常适合工业化连续作业。
- 光斑：输出激光为近似TEM00模，光束质量高。
- 长寿命：免维护,具有极长的使用寿命。
- 适用材料：纸张、竹木制品、亚克力、橡胶等。

Performance Feature

- Structure: The RF laser products adopt full metal and complete sealed structure with small size, free maintenance, and high beam quality. The output power is stable and can be adjusted conveniently. With longer lifetime, that is suitable for industrial continuous operation.
- The spot: Output laser is approximate TEM00 mode, with high beam quality.
- Long life: Maintenance free, extremely long life .
- Applicable materials: Paper, wood products, acrylic, rubber, etc.
- Application: Drilling, cutting, engraving.

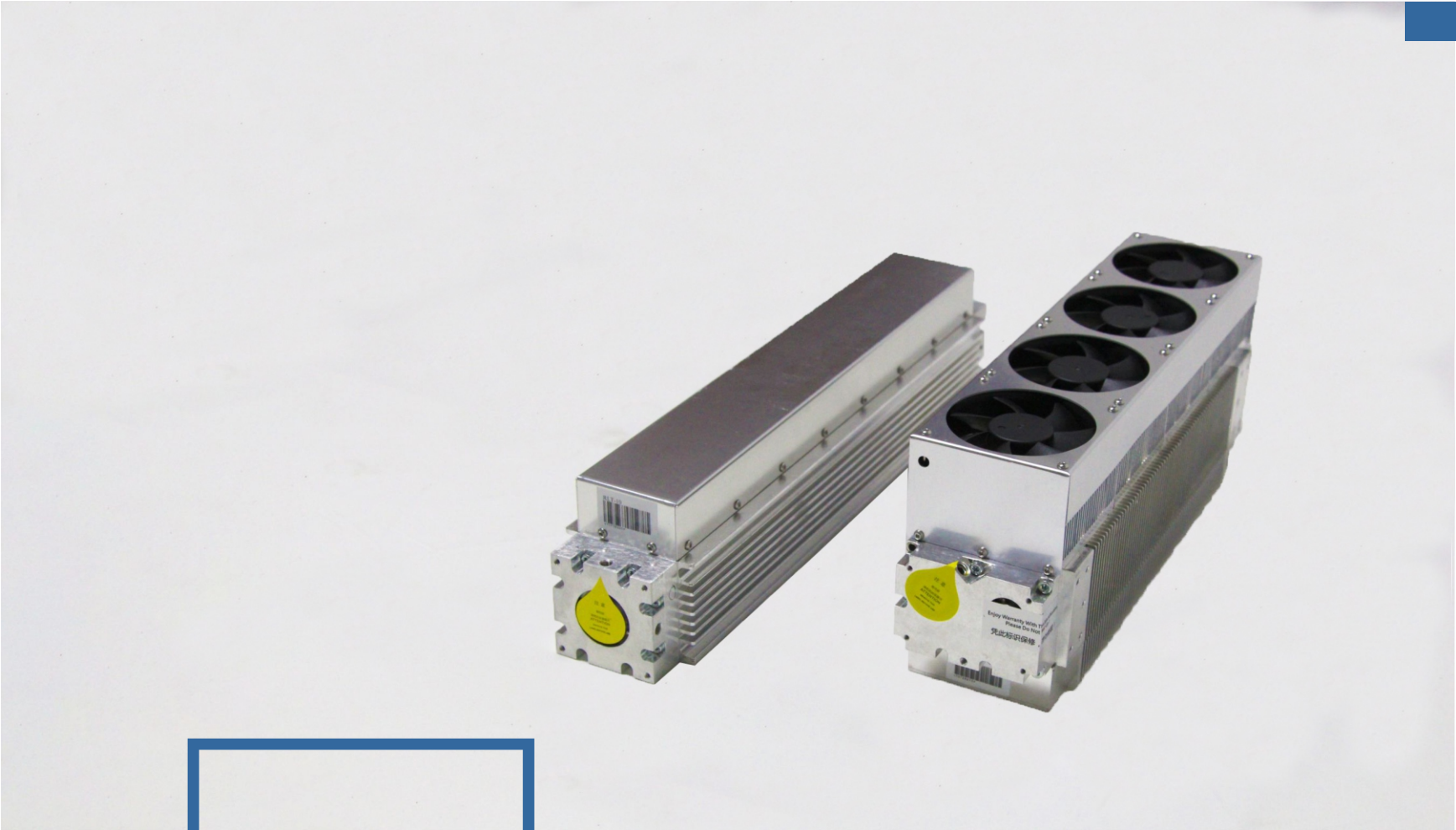
技术参数

Technical Parameter

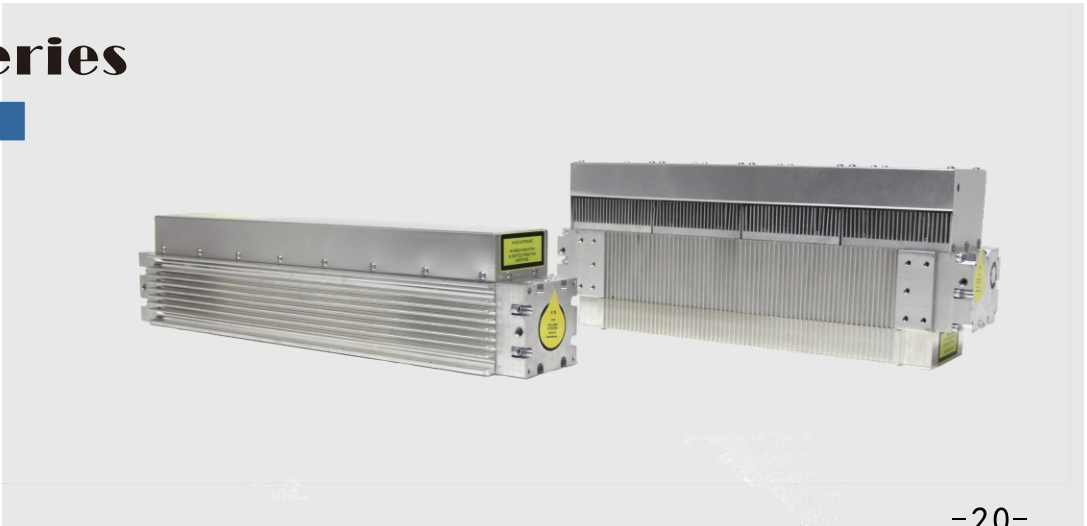
型号 Model	额定功率 Rated power (W)	模式 Mode quality	发散角 Beam divergence (mrad)	光束直径 Beam size (mm)	尺寸 Laser tube size L×W×H (mm)	功率 不稳定性 Power Instability (%)	波长 Wavelength (μm)	质保期 Warranty (M)
RLT-10	10	TEM00	4±0.5	3.5±0.2	430×85×90	≤±5	10.6±0.1	12
RLT-30	30	TEM00	7.5±0.5	1.8±0.2	357×92.5×141	≤±5	10.6±0.1	12

注：其他波长可定制

Note:Other wavelengths can be customized.



RLT Series
RLT系列



Laser Power Supply

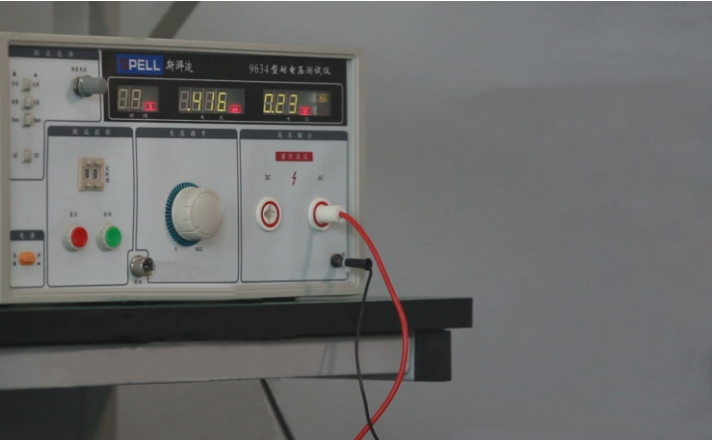
激光电源

YL-U系列 激光电源
YL-U Series Technical Parameter

型号 Model	输出电压 Output Voltage (kV)	最大电流 Max. Current (mA)	尺寸 Size L×W×H (mm)	保修期 Warranty (M)	壳体颜色 Box Color	配套管型 Laser Tube Suggested
YL-U1	35	28	270×180×80	12	黑色Black	A2s,A4s,R3,R5,ALT-80,H2,H4
YL-U2	45	35	320×210×80	12	黑色Black	A6s,A8s,R7,R9,H6

YL 系列 激光电源
YL Series Technical Parameter

型号 Model	输出电压 Output Voltage (kV)	最大电流 Max. Current (mA)	尺寸 Size L×W×H (mm)	保修期 Warranty (M)	壳体颜色 Box Color	配套管型 Laser Tube Suggested
YL-1	25	20	172×150×100	12	黑色Black	ALT-40
YL-2	30	25	220×150×100	12	黑色Black	A0s,A1s,R1,T0,T2,ALT-60,H1



激光电源是针对我公司激光管研制而成，产品具有性能稳定，抗干扰能力强，体积小，耐老化的特点，因此具有良好的通用性。

Power Supply possesses stable performance, strong anti-jamming capability, small size and anti-aging. This series of products possess a good versatility.

Laser Accessories

激光配件

激光功率计

Power Meter

型号 Model	YL-S-III	HLP-200B
样式 Type	台式 Desktop	手持式 Hand-held
量程 Measurement	0-200W	0-200W
最小分辨率 Min. Resolution	0.1W	0.1W
光感面积 Light Sensitive Area	Φ28mm	Φ19mm
校准波长 Wavelength	10.6μm	10.6μm
冷却方式 Cooling Method	水冷 Water-cooled	自然冷却 Nature-cooled
应用范围 Application	二氧化碳激光管 CO ₂ Laser Tube	二氧化碳激光管 CO ₂ Laser Tube
电源要求 Power Supply Requirement	AC 220V±10%,50Hz	3V/3.6V 2032纽扣电池 Button batteries
显示 Display	双极性三位半LED显示 Bipolar 3 1/2 LED Display	四位LCD显示 Four Numeric LCD display

HLP-200B

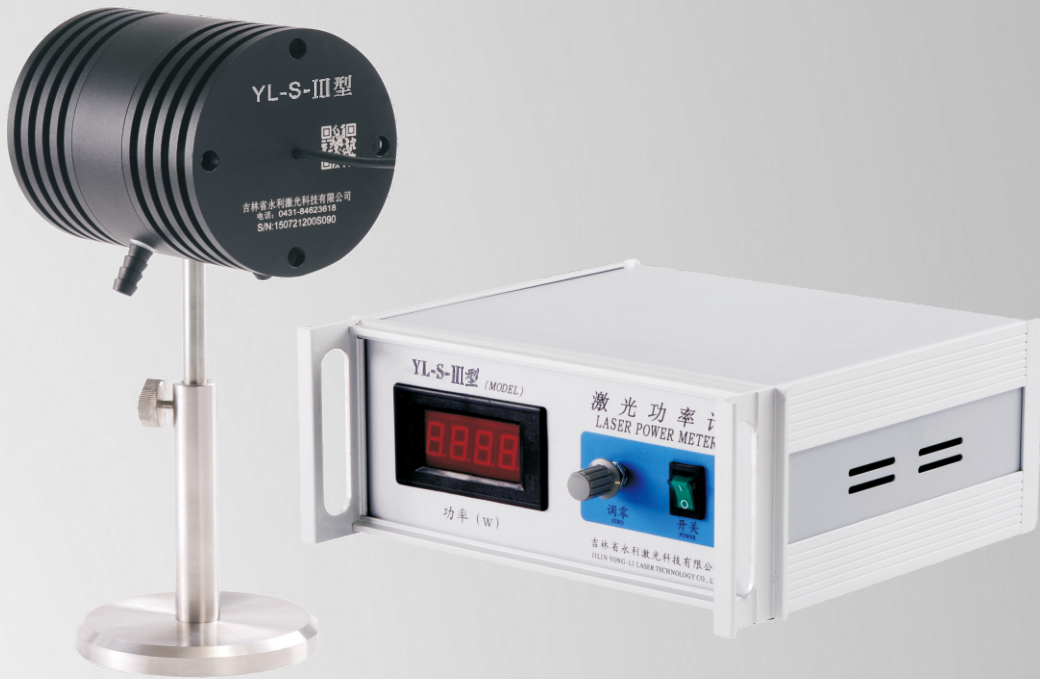
手持功率计



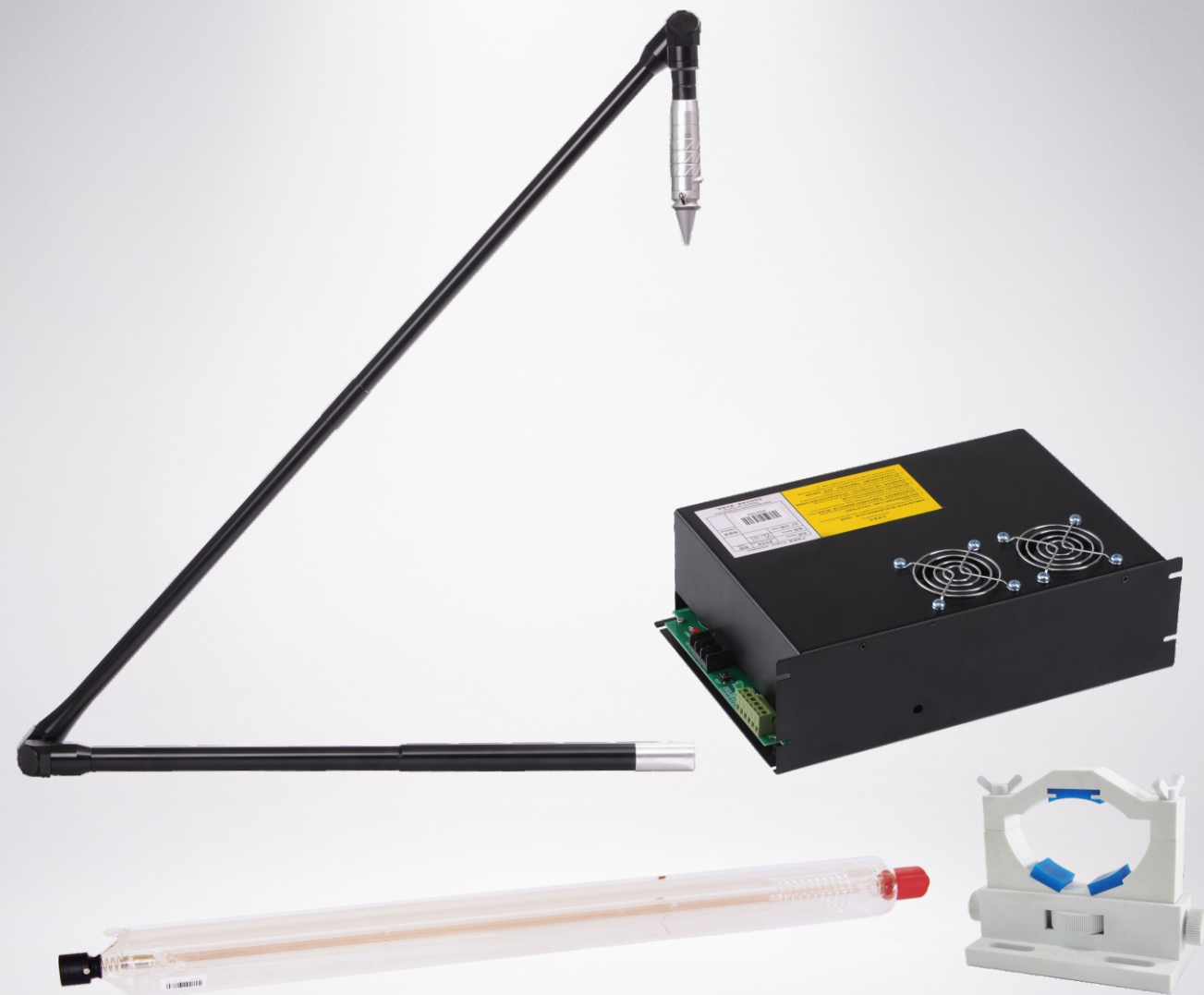
- 体积小 易携带
- 内置电源 使用方便
- 读数直观 测量精度高
- Small, easy portable
- Convenient to use with inset power supply
- Easy to read, high accuracy

YL-S-III

台式功率计



- 响应快 精度高
- 高效热敏探头可测量宽光谱范围
- 接受面积均匀性好
- 水冷方式适合长时间测量
- Fast response, high accuracy
- Efficient thermal probe ensures a wide spectral range measurements.
- Receiving area with good uniformity
- Water-cooled is suitable for long time measurements.



Laser Accessories

激光配件

万向传输激光系统 Universal Transmission Laser System

该系统为我公司专门针对绣花机和刺绣机研发生产，包括二氧化碳激光传输器，二氧化碳激光管及其配套电源和可调式激光管支撑架。该系统的诞生解决了多项激光应用于绣花、缝纫领域出现的激光镜片易污染、机器震动带来的光束波动、激光切缝过宽等技术难题，满足了客户对高质量的绣切要求。

This system is researched and produced especially for embroidery machine, that includes laser transmitter, power supply and CO2 laser tubes. The system resolves problems of embroidery, sewing fields such as lens contamination, beam fluctuation due to machine vibration, laser kerf over-wide etc. which fulfills customers requirement for the high quality embroidering and cutting.

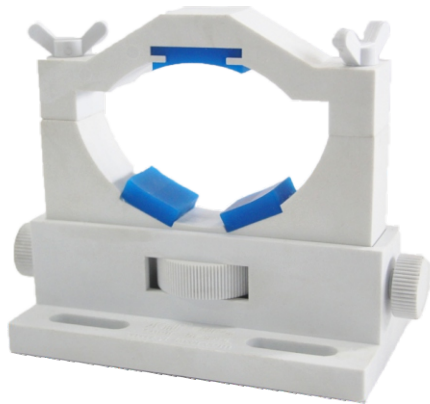




激光管支架 Laser Tube Bracket

The bracket, our patent product, is convenient for customer to set the tube height with the lift screw. The customer can also adjust the diameter of the bracket according to the tube diameter, the adjusted range is 50mm-80mm. The bracket features with good matching, easy assembling, operating and adjusting which make it was recognized by customers at home and abroad.

该支架为我公司专利产品。支架可升降，方便客户设定所需高度。同时支架直径亦可调节，调节范围为**50mm-80mm**，客户可根据需要自行调整。该支架匹配性高，安装方便，操作简单，易于调节，得到国内外客户的认可。



Max.
Power
(W)



激光镜片 Laser Lens&Mirrors

技术参数 Technical Parameter

名称 Products	材料 Material	直径(可选) Diameter (Optional) (mm)	焦距(可选) Focal Length (Optional) (mm)
平面反射镜 Flat Mirrors	硅 Si	Φ 25, Φ 30	—
平面反射镜 Flat Mirrors	钼 Mo	Φ 20, Φ 25	—
聚焦镜 Focus lens	美国 American ZnSe	Φ 20, Φ 25.4	50.8, 63.5
聚焦镜 Focus lens	美国 American II-VI ZnSe	Φ 20, Φ 25.4	50.8, 63.5



High Voltage Connector

高压接头

该产品为我司专利产品，可以替换市场上不同规格的高压接头。本品操作简单，防护性好，替代性强。

接线更便捷：区别于以往的旋钮式高压接头，此次高压接头采用扣合式，只需将两根高压线伸进硅胶帽，扣紧接线端，最后扣合壳体与硅胶帽即可！操作简单，最大程度的减少人工干扰，省时省力！

防护更全面：因高压接头的整体性，减少了以往因高压接线防护不良而发生的漏电、打火等情况的发生，更是削弱因工作环境潮湿所造成的影响，安全省心！

It's our patented product. Can be replaced high-voltage joints of different specifications . It's easy to operate, good in protection and strong in substitution.

Wiring is more convenient: unlike the knob-type high-pressure joint in the past, this high-pressure joint adopts the button type. Only two high-voltage wires are inserted into the silica gel cap, the connection end is fastened, and finally the shell and the silica gel cap are fastened. Simple operation, minimize manual interference, save time and effort!

Protection is more comprehensive: because of the integrity of high-voltage joints, it reduces the occurrence of leakage and lightning caused by poor protection of high-voltage wiring in the past, and also weakens the impact caused by humid working environment, which is safety.

Red light indicator

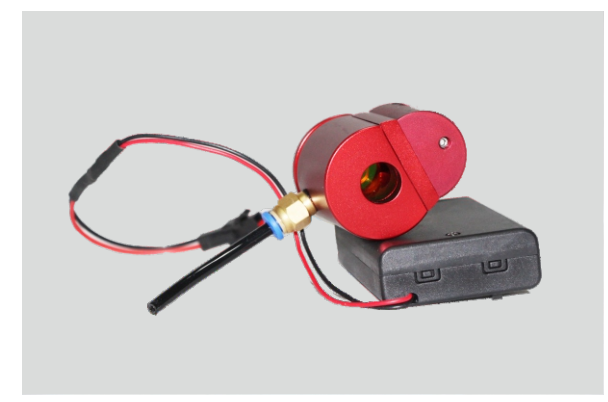
红光指示

PRODUCT FEATURES

Based on years of production, R&D experience,we solved the invisibility issue of CO₂ laser transmission path. Its smart design,stable performance,and optional batter box design are good for laser path alignment.

性能特点

我公司结合多年生产及研发经验，研发出红光指示产品，解决了二氧化碳激光管传输路径不可见的问题，该产品设计小巧，性能稳定，可选配电池盒装置，是调整激光光路的最佳搭档。



Honor&Qualifications 荣誉资质

